

November 12, 2025

BSE Limited	National Stock Exchange of India Limited
Phiroze Jeejeebhoy Towers, Dalal Street, Mumbai - 400 001	Exchange Plaza, C-1, Block - G, Bandra Kurla Complex, Bandra (East), Mumbai - 400 051
Scrip Code: 530367	Symbol: NRBBEARING

Sub: Investor Presentation on Financial Results and our earlier intimation dated November 7, 2025 regarding Earning Call

Dear Sir/Ma'am,

In accordance with Regulation 30 read with Schedule III of the Listing Regulations, please find enclosed a copy of 'Investor Presentation' in connection with the Unaudited Standalone and Consolidated Financial Results of the Company for the Q2FY26 and half year ended on September 30, 2025.

The aforesaid presentation will also be uploaded on the website of the Company i.e. <https://www.nrbbearings.com>

Thanking you,
Yours faithfully,

For NRB BEARINGS LIMITED

Khyati Danani
Company Secretary & Compliance Officer
Membership no. A21844

Encl: as above

NRB BEARINGS

Investors update

Q2 / H1 FY26 | November 2025

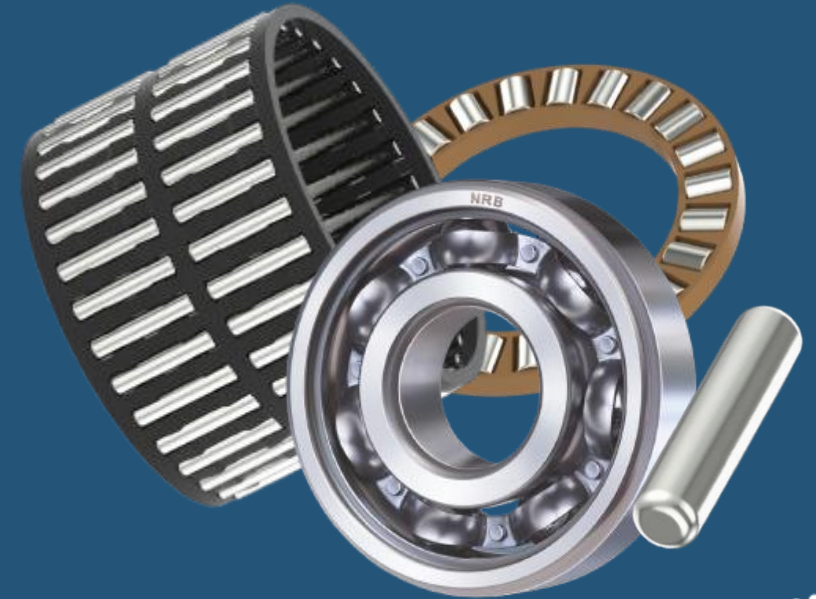
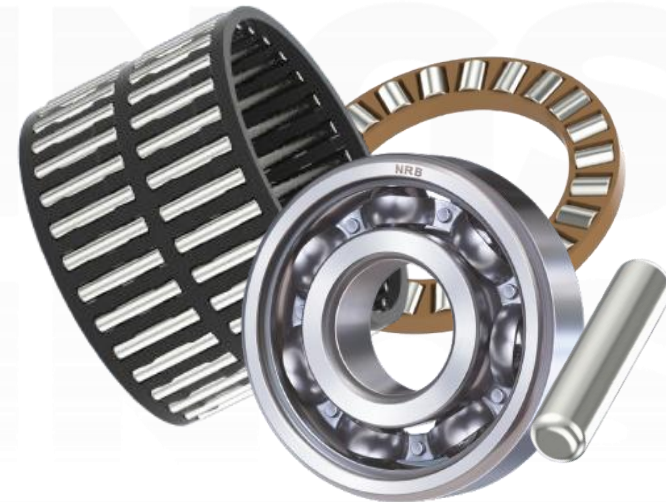


Table of Contents

- | | | | |
|---|------------------------|---|------------------------|
| 1 | Who We Are | 5 | Performance Highlights |
| 2 | What We Do | 6 | Future Growth Horizons |
| 3 | How We Win | 7 | Investment Rationale |
| 4 | Strengthening the Core | 8 | Annexure |



Who We Are



NRB Bearings - Engineering Motion. Powering Growth



India's largest independent bearing manufacturer - powering motion across automotive, industrial, and next-generation mobility platforms

60+ Years
Engineering Legacy



7 Manufacturing Facilities
Across India & Thailand



43
Countries served



#1 in India
*For Cylindrical and needle roller bearing
in Indian market*



~25% Export Revenue
From Global OEMs



2 Government Recognised
R&D Centres
Driving Future Mobility



70 Robotic Lines
Automation-Led Precision Manufacturing



90%+ Vehicles
Powered by NRB Bearings on Indian roads



30% Growth in
Industrial Friction Solutions



About NRB Bearings

NRB Bearings Limited is India's foremost manufacturer of a wide range of friction solutions, and a leader in cylindrical, needle roller bearings; a pioneer in friction solutions for the automotive giants, in India and globally.

NRB's R&D Centre played a key role in its success and is enabling the company in its foray into industrial applications with a rapidly expanding into product range for off highway and construction equipment, HVAC system, Robotics & automation, industrial machinery, agriculture, and with strategic plans to enter the Aerospace and Defence segments



Domestic Presence & Customers

 **90%+**

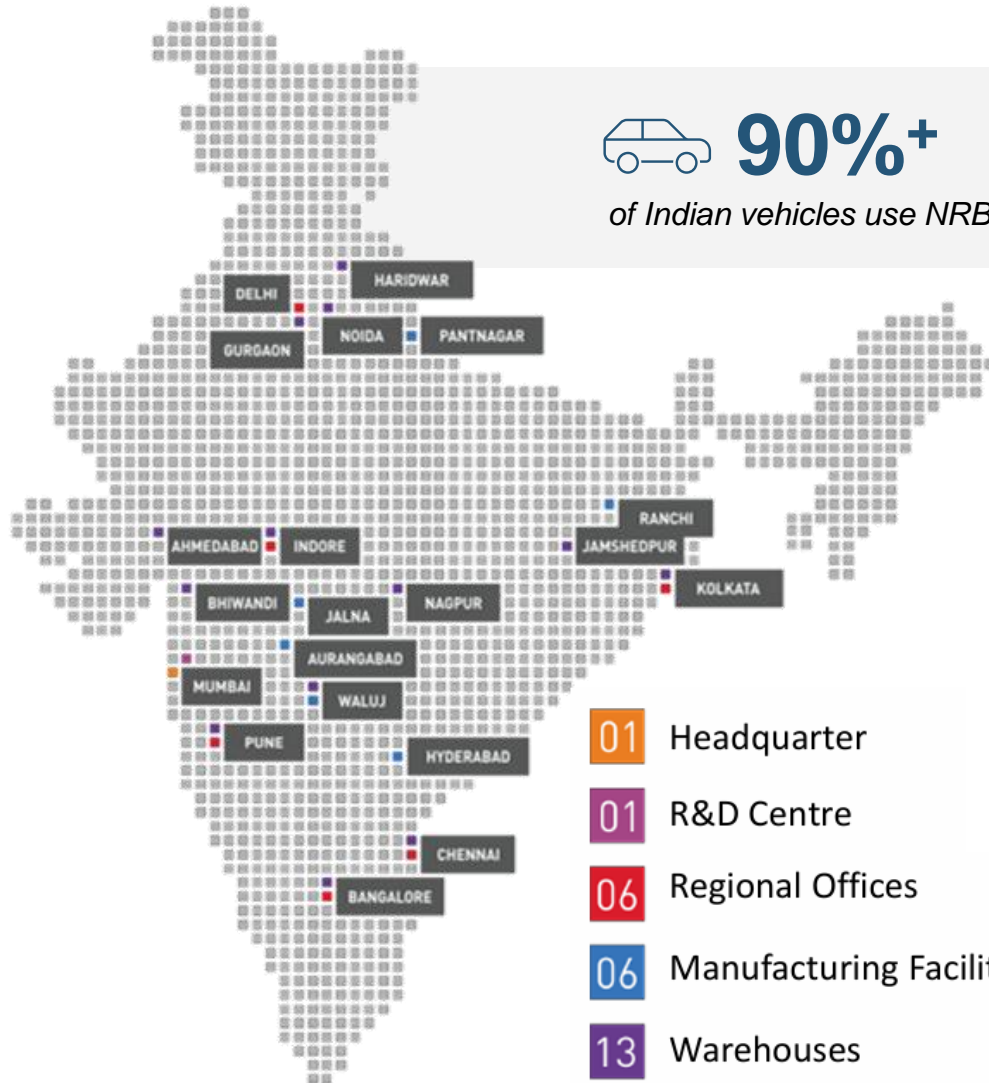
of Indian vehicles use NRB products

 **65%+ NRB**

(in volume)

 **75%+ CRB**

(in volume)



HONDA
The Power of Dreams


Hero

TVS 

 **BAJAJ**

 **YAMAHA**

ROYAL ENFIELD


Mahindra


ASHOK LEYLAND


EICHER


TATA

 **MARUTI SUZUKI**

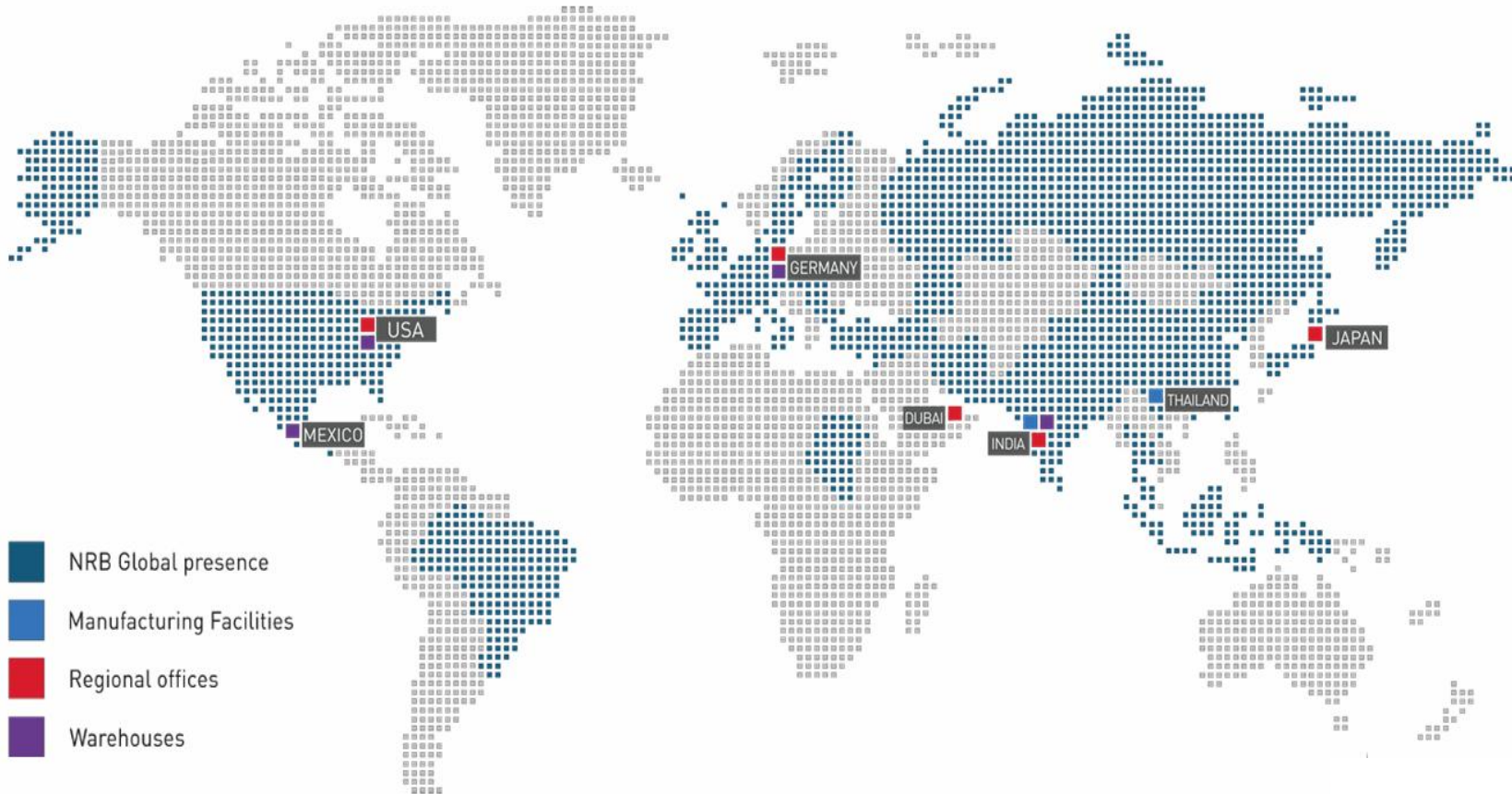

HYUNDAI




JOHN DEERE

GRAZIANO
Transmission Systems

Global Presence & Customers



*Global supplier
from design to delivery.*



43

Countries served



DAIMLER



MAGNA

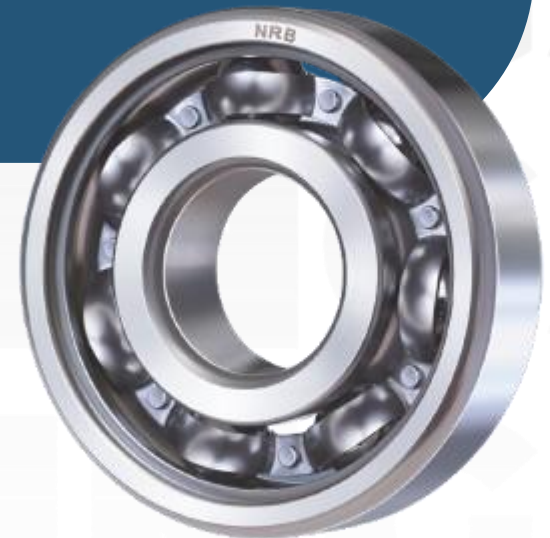


Progress Rail
A Caterpillar Company



BorgWarner

What We Do



Our Product Portfolio



Needles and
Special Rollers



Crank pin,
Planetary Shaft and
other Special Pins



Drawn Cup Needle
Bearing



Thrust Bearing



Split Cage



Brass Roller Cage



Washer and Spacer



Cylindrical Roller
Bearings



Unitized Thrust
Bearing



Needle and Roller
Cage



Rocker-arm
Bearing



Crank Pin Bearing



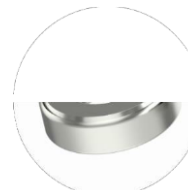
Polyamide Needle
Cage



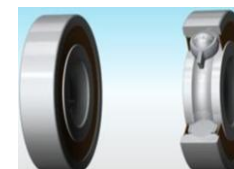
Full Compliment
Needle Bearing



Ball Cage



Cylindrical/
Tapered Roller
Thrust Bearing



Special Ball Bearing



Ring / Bush/
Sleeve

How We Win



Our Four Strategic Pillars Driving Sustained Growth

Anchored in innovation, powered by efficiency, and guided by sustainable execution



Technology & Innovation

Investing in R&D for industrial friction solutions and EV-ready technologies & Aero space applications

1



Global Expansion

Enhancing OEM partnership for automotive and industrial friction solutions

2



Operational Excellence

Enhancing growth through productivity improvement, automation and robotics

3



Financial Discipline & ESG

Profitable growth with strong governance, with sustainable material and renewable focus

4

Driving innovation through advanced R&D, materials research,, analysis , testing centre & future technological expansion



2000



Received Government Recognition for our first path-breaking commissioning R&D Centre in Thane



2016



Setup second R&D Centre at Waluj for Light weighting and Sustainable Product Design



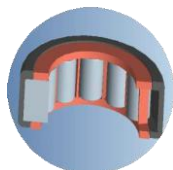
2020



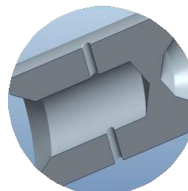
Inaugurated 35000 Sq. Ft expanded R&D centre, testing and robotic laboratory at Turbhe, Navi Mumbai

- Research & Development of global standards is NRB's key differentiator; the focus is on co- designing new platforms based on cutting edge technology for global OEMs and supporting domestic players in future- ready, EV and hybrid technologies to create an edge.

Continuous innovation in design, materials, and application enables NRB to deliver performance and efficiency across next-generation mobility platforms



Lightweight CRB with special HT
for balancer shaft applications



Shafts
for planetary gear box transmission



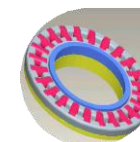
Universal joint bearings
for steering column application



Delta flex bearings
for steering application



UJ cross cup bearing with special sealing
for the universal joint Application



Needle thrust cage with spherical washer
for transmission



Maintenance free
king pin bearing



Unitized thrust
bearings



Tapered Thrust
Bearing

Strengthening **the Core**



From Challenges to Clarity

Operational, structural, and financial issues now fully resolved - NRB enters a phase of stability and focused growth

CHALLENGES



Waluj Fire
(2023)

Family Settlement & Demerger
(Feb 2025)

Muted Growth due to damage from fire
(FY22 - FY25)

IMPACT

Temporary shutdown; INR 100+ Cr estimated sales loss

One-off loss due to payment of ₹55 Cr to NIBL

Low CAGR due to disruption

STATUS TODAY



All lines fully restored (Feb 2025); production normalized; growth rebounded to double digits

NRB Bearings now holds 100% control; brand & IP secured; no overlap with NIBL

Post-restoration: H1FY26 revenue +8% YoY; PAT +21%; AND foray into Industrial bearings

Performance Highlights



Management Commentary

on HY1/Q2 results, 10-Nov-2025



Harshbeena Zaveri

Vice Chairman and Managing Director

Commenting on the performance, Ms. Harshbeena Zaveri, Managing Director said, *“We are pleased to report our Q2FY26 and H1FY26 results, reflecting strong financial performance for three quarters in a row. This has been a great H1 with PAT rising by 37.9 percent (standalone) and the consolidated EBITDA as a percentage of revenue at 20.3%.*

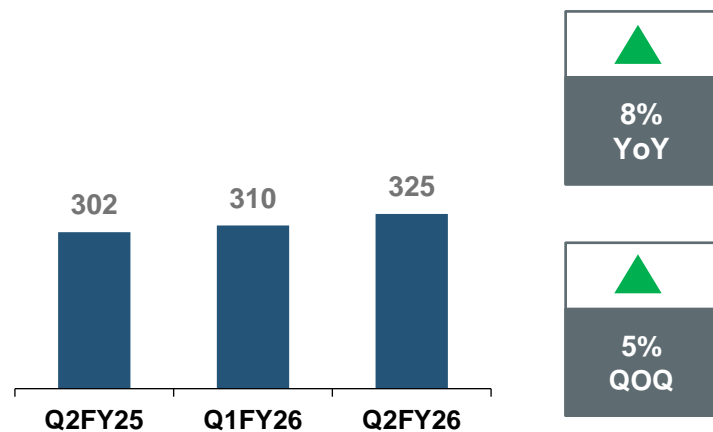
Our accelerator will be high market share, deeper penetration with an expanding range of products from design to delivery, leveraging our R&D capabilities at existing OEMs in Mobility Friction Solutions, whilst aggressively entering the Industrial friction solutions space targeting high growth and under-penetrated segments and sunrise industries.

As we embark on the 1st phase of our expansion plan of INR 200 Cr towards achieving our aspirational vision of ₹2,500+ turnover by 2031, and re-shaping NRB’s future, our strategy encompasses forging global joint venture partnerships and selective acquisition for next-generation industrial applications, building infrastructure and modernizing our manufacturing ecosystem and enhancing NRB’s mass-customization capabilities which are a huge competitive advantage in a constantly evolving world, as we continue to expand our global footprint.”

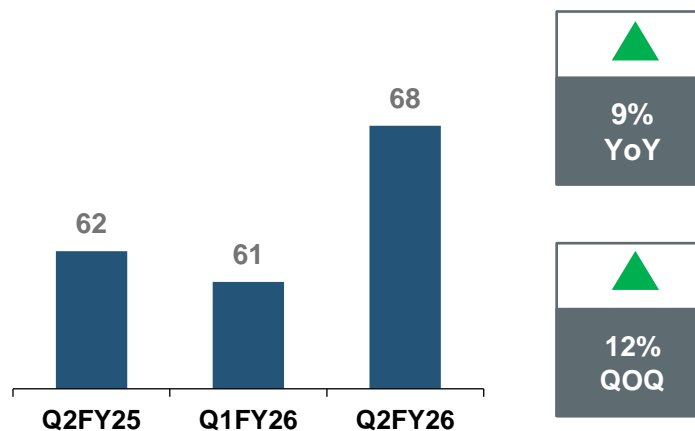
Consolidated Financial Highlights

REVENUE

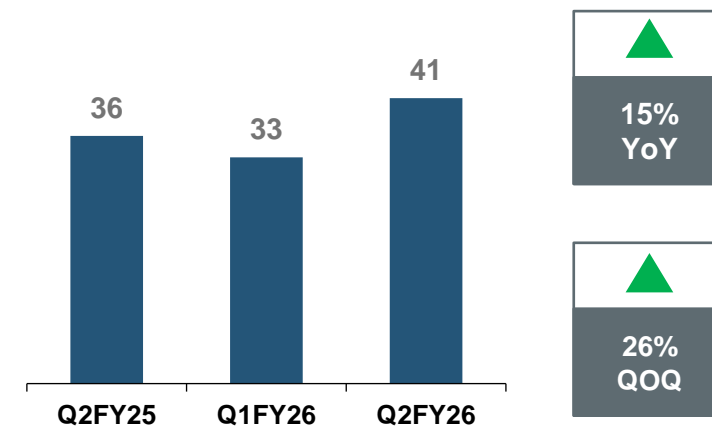
QUARTERLY



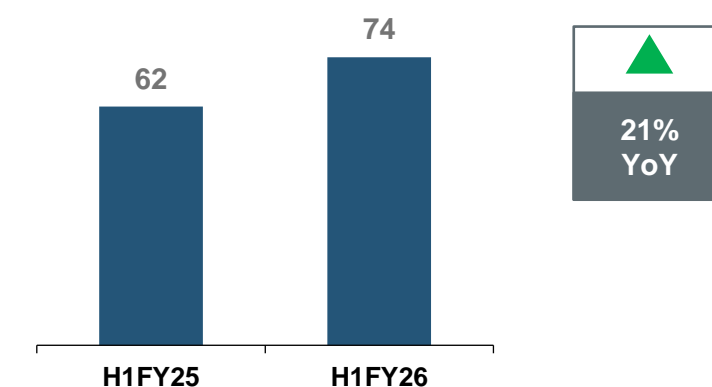
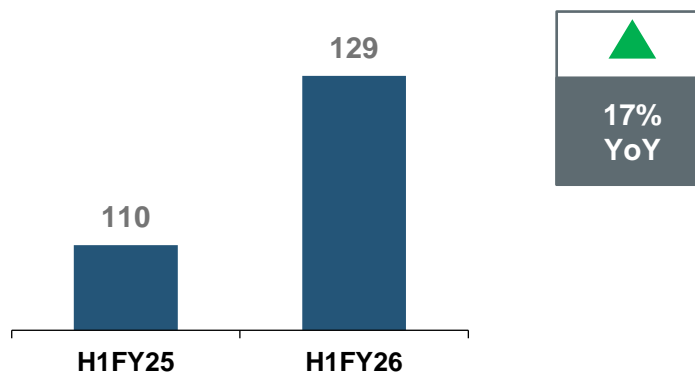
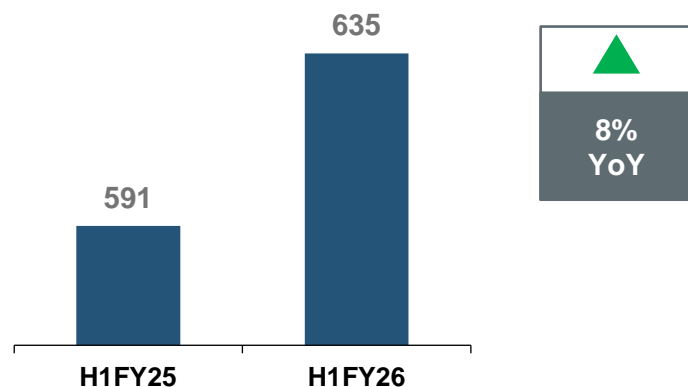
EBITDA



PAT



HALF YEARLY



Consolidated Financial Highlights

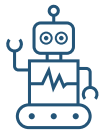
₹ In crores	H1FY26	H1FY25	YoY%	Q2FY26	Q1FY26	QoQ%	Q2FY25	YoY%
Revenue From Operations	635.3	590.8	7.5%	325.2	310.0	4.9%	301.5	7.9%
Other Income	23.7	15.5	52.9%	14.3	9.4	52.0%	10.4	37.8%
Total Income	659.0	606.3	8.7%	339.5	319.5	6.3%	311.9	8.9%
EBITDA	128.7	109.6	17.4%	67.9	60.8	11.5%	62.2	9.1%
<i>EBITDA% (% of Rev)</i>	<i>20.3%</i>	<i>18.6%</i>		<i>20.9%</i>	<i>19.6%</i>		<i>20.6%</i>	
Profit after Tax	73.3	61.6	19.0%	41.4	32.8	26.2%	35.9	15.2%
<i>PAT Margin (% of Rev)</i>	<i>11.5%</i>	<i>10.4%</i>		<i>12.7%</i>	<i>10.6%</i>		<i>11.9%</i>	

Future Strategy



Expanding into New-Generation Industries

NRB is evolving beyond bearings - driving growth through robotics, advanced manufacturing, and next-generation mobility



Robotics & Automation

Manufacturing efficiency driven by leveraging 70+ in-house robots and precision expertise to tap opportunities in industrial and service robotic



Industrial, Aerospace & Defence

Expanding into high-value precision engineering sectors through capability-led diversification and strategic partnerships

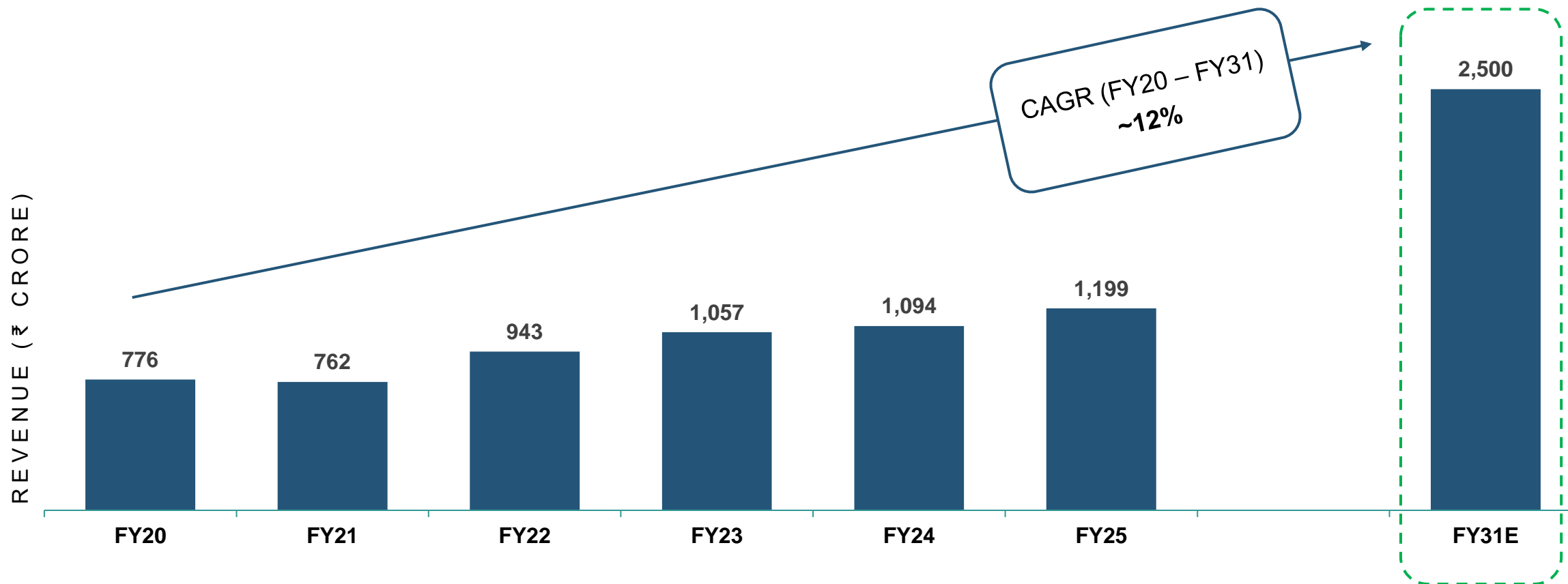


Next-Gen Mobility Technologies

Entering next-generation EV applications, sensor bearings and smart motion systems - aligning with future propulsion trends

Growth Journey and Future Aspirations

Steady growth momentum with a clear roadmap to ₹2,500 crore by FY31



Driving revenue towards ₹2,500 crore through diversification into industrial and aerospace segments, capacity expansion for global OEM programs, and sustained double-digit growth in core automotive business

Investment Rationale



Why NRB Bearings?



Technology Leadership

Proven R&D strength and innovation in EV, hybrid, and precision bearings



Global Customer Trust

Supplying 43 countries; 25% of Business at Consolidated level from global MNCs



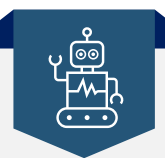
Integrated & Agile Manufacturing

Advanced automation with 70+ robots ensuring scale, speed, and quality



Financial Strength & Discipline

Consistent performance, healthy margins, and prudent capital allocation



Future-Ready Diversification

Expanding into robotics, aerospace, defence, and next-gen mobility technologies

Annexure



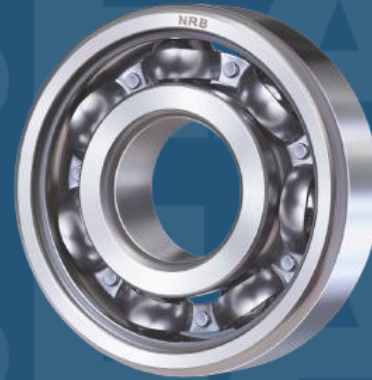
Consolidated Income Statement

Particulars (₹ Cr)	Q2FY26	Q1FY26	Q2FY25	H1FY26	H1FY25
Revenue From Operations	325.20	310.05	301.51	635.25	590.80
Other Income	14.31	9.41	10.38	23.72	15.45
Total Income	339.51	319.46	311.89	658.97	606.25
Total Expenditure	287.13	274.46	264.26	561.59	525.53
EBITDA	67.87	60.83	62.21	128.70	109.61
<i>EBITDA Margin</i>	20.0%	19.0%	19.9%	19.5%	18.1%
Depreciation	13.27	12.98	11.57	26.25	22.74
Finance Cost	2.22	2.85	3.01	5.07	6.15
Profit Before Tax	52.38	45.00	47.63	97.38	80.72
<i>PBT Margin</i>	15.4%	14.1%	15.3%	14.8%	13.3%
Tax	10.97	12.19	11.69	23.16	19.16
Profit after Tax	41.41	32.81	35.94	74.22	61.56
<i>PAT Margin</i>	12.2%	10.3%	11.5%	11.3%	10.2%
Basic EPS	4.19	3.31	3.64	7.5	6.21
Diluted EPS	4.19	3.31	3.64	7.5	6.21

Consolidated Balance sheet

Particulars	As at 30th September 2025	As at 31st March 2025
Equity & Liabilities		
Shareholder's Funds		
Share Capital	19.38	19.38
Other Equity	934.87	898.79
Equity Attributable to Owners of the Parent	954.25	918.17
Non-Current Liabilities	19.02	18.29
Total Equity	973.27	936.46
Liabilities		
Non-Current Liabilities		
Lease Liabilities	0.43	0.85
Other Financial Liabilities	0.95	0.95
Deferred-tax Liabilities	18.47	18.58
Total Non Current Liabilities	19.85	20.38
Current Liabilities		
Borrowings	130.58	183.99
Lease Liabilities	1.66	2.38
Trade Payables		
Total Outstanding Dues of Micro enterprises and Small enterprise	23.76	17.33
Total Outstanding Dues of Creditors other than micro enterprises and Small Enterprises	97.16	86.4
Other Financial Liabilities	36.06	27.57
Other Current Liabilities	26.50	13.5
Provision	14.54	11.63
Current Tax Liabilities Net	7.39	6.43
Total Current Liabilities	337.65	349.23
Total Liabilities	357.5	369.61
Total Equity and Liabilities	1330.77	1306.07

Particulars	As at 30th September 2025	As at 31st March 2025
ASSETS		
Non-Current Assets		
Property, Plant & Equipment	393.98	373.75
Capital Work in Progress	36.66	39.36
Goodwill	0.48	0.48
Other Intangible Assets	1.95	2.32
Intangible Assets Under Development	0.21	0.21
Investments	26.74	23.48
Other Financial Assets	7.97	3.82
Non-Current income tax assets (Net)	44.04	29.46
Other Non Current Assets	4.22	4.88
Total Non-Current Assets	516.25	477.76
Current Assets		
Inventories	464.94	437.25
Investments	37.10	34.48
Trade Receivables	229.74	215.57
Cash and Cash Equivalents	29.19	53.56
Bank Balances	5.80	2.43
Loans	0.32	0.17
Other Financial Assets	0.34	0.24
Current tax assets (net)	-	12.00
Other Current assets	47.09	72.61
Total Current Assets	814.52	828.31
Total Assets	1,330.77	1,306.07



Thank you

www.nrbbearings.com

For further information please contact:

NRB Bearings Limited

Email: investorcare@nrb.co.in

Ernst & Young LLP

Diwakar Pingle

Email: diwakar.pingle@in.ey.com

Ernst & Young LLP

Siddesh Chawan

Email: siddesh.chawan@in.ey.com